

# LANDSCAPE STATEMENT FOR PROPOSED DIGITAL SCREEN INFRASTRUCTURE

---



TZANNES CONCEPT DESIGN

PREPARED FOR:

**JCDcaux**

AUGUST 2023

PREPARED BY:

**Common Grounds**  
LandscapeArchitecture®

# Design Statement

The proposed digital screen infrastructure project for the Western Distributor aims to revolutionise urban digital displays through the incorporation of best practice approaches to living architecture. The concept aims to set a new standard for urban displays by seamlessly integrating iconic, innovative green infrastructure into the public domain, enhancing the overall experience for commuters and visitors alike.

## 1.1. Best practice in irrigation, planting and substrate.

Our project will exemplify best practice in water efficiency through the incorporation of wicking bed technology and drip irrigation. The design will embed an approach to optimal water distribution, reducing wastage, and conserving water resources. By showcasing these innovative water technologies, we set a standard for sustainable urban green infrastructure, inspiring other projects to follow suit.

Secondly, our approach to planting embraces a three layered design, consisting of companion planting, that maximise coverage, resilience and pollination times (for further information refer to Figure 2).

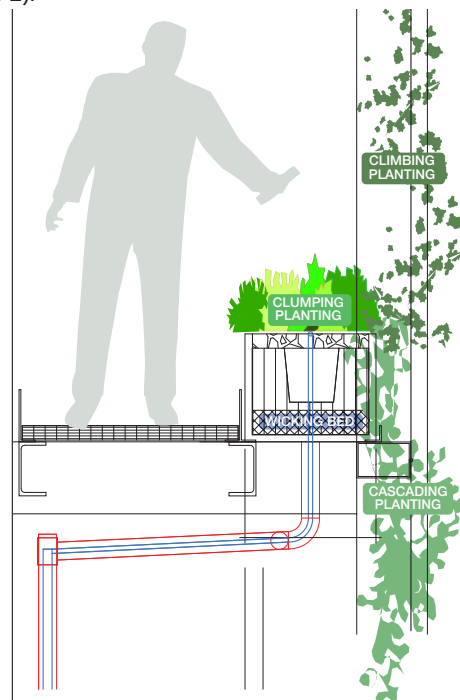


Figure 1. Wicking beds will provide the opportunity to store water during rainfall for drier months (El Nino). This coupled with a three tiered approach to planting will provide greater, more resilient coverage across the structure. (Common Grounds, 2023)

In addition, the planter beds will contain an inorganic growing medium that will result in a nutrient rich yet anaerobic environment; reducing the risk of plant failure. The growing medium will be lightweight (approx. 450kg/m<sup>2</sup>) which will result in the ability to provide a more slender structure (for sizing refer architects drawings).

## 1.2. Pre-grown.

We understand that green infrastructure can take some time to grow and establish itself. Our project proposes a construction methodology that uses pre-grown planters and units; ensuring the plants are both semi-mature on install and suited to their growing environments (not transplanted).

### 1.3. A dynamic landscape.

At the heart of the landscape design narrative is the celebration of growth and the cyclical nature of seasons, exemplified through the careful selection of plants that not only exhibit vigorous growth patterns but also showcase other natural processes such as flowering, seasonal colouration, and graceful movement in the wind. This approach creates a visually captivating display that evolves with the changing seasons, creating a dynamic and engaging experience for passersby.

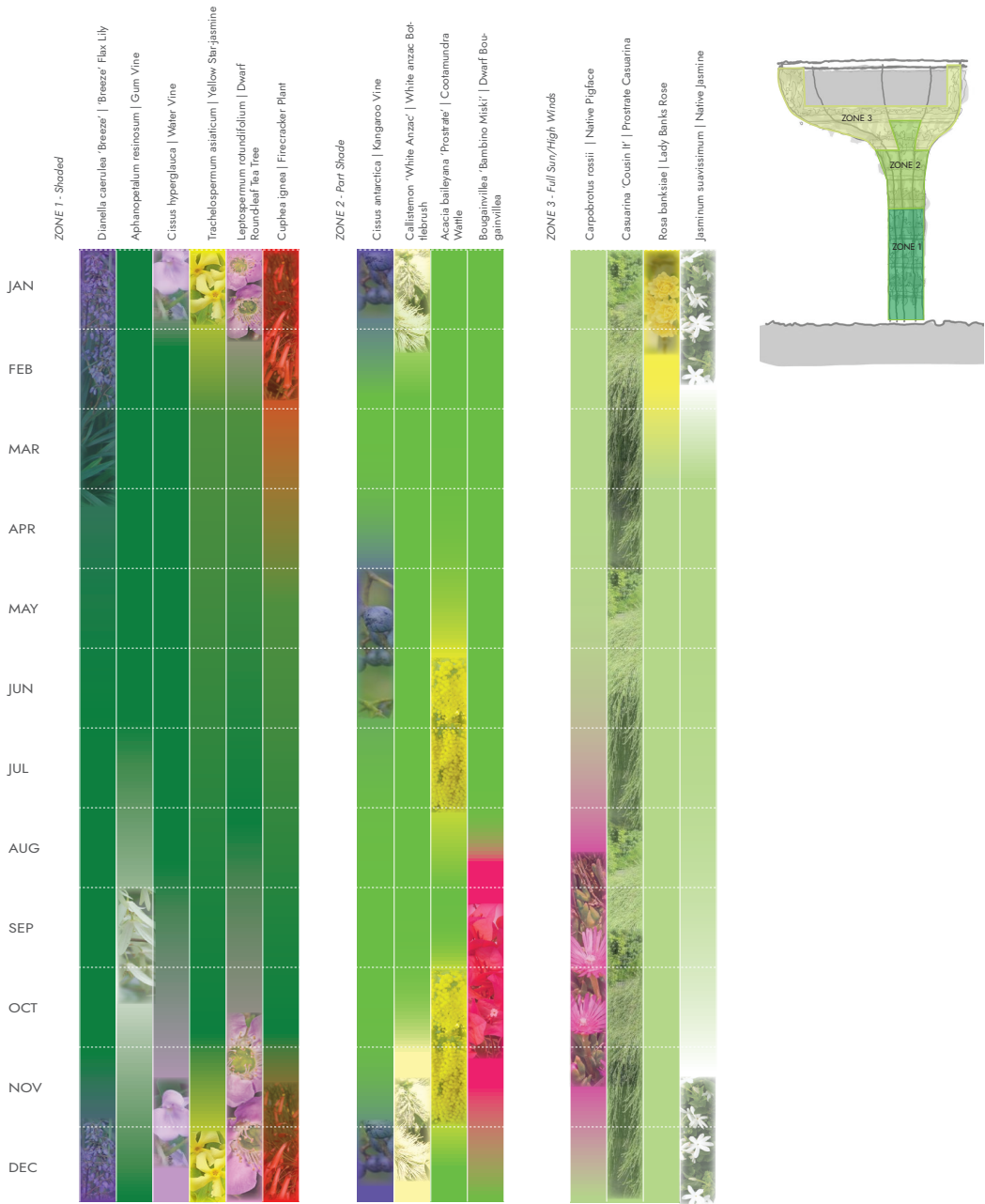


Figure 2. "Seasonal Planting Chart"; showcasing that the project has the ability to grow, change and evolve over time; becoming more than a static structure. (Common Grounds, 2023)

